

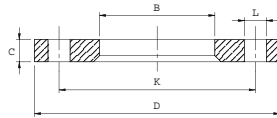
FLANGE ALU

PIANE SCORREVOLI

CIECHE

Flange piane scorrevoli per dimensioni ISO

Loose flanges ISO size
 Bridas planas locas para dimensiones ISO
 Lose Flansche ISO-Abmessungen
 Brides tournantes plates pour dimensions ISO

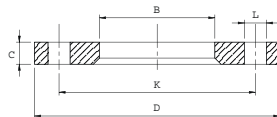


Dimensioni per accoppiamenti secondo norma UNI 2223-67 PN 10
 Dimensions according to DIN 2642 PN 10 specifications
 Dimensiones segun DIN 2642 PN 10
 Abmessungen nach DIN 2642 PN 10
 Dimensions pour couplage selon DIN 2642 PN 10

DN	D	K	L	Holes N°	B ISO	C
10	90	60	14	4	19	12
15	95	65	14	4	24	12
20	105	75	14	4	30	12
25	115	85	14	4	36	12
32	140	100	18	4	46	16
40	150	110	18	4	54	16
50	165	125	18	4	65	16
65	185	145	18	4	81	16
80	200	160	18	8	94	18
100	220	180	18	8	119	18
125	250	210	18	8	145	18
150	285	240	22	8	173	18
200	340	295	22	8	225	20
250	395	350	22	12	279	22
300	445	400	22	12	329	22
350	505	460	22	16	362	22
400	565	515	25	16	413	25
450	615	565	25	20	465	25
500	670	620	25	20	517	28
600	780	725	30	20	618	30
700	895	840	30	24	715	40
800	1015	950	33	24	825	40
900	1115	1050	33	28	930	44
1000	1230	1160	36	28	1030	44
1200	1455	1380	39	32	1240	52

Flange piane scorrevoli per dimensioni Metriche

Loose flanges in Metric size
 Bridas planas locas para dimensiones M triacas
 Lose Flansche Metrische Abmessungen
 Brides tournantes plates pour dimensions M triques



Dimensioni per accoppiamenti secondo norma UNI 2223-67 PN 10
 Dimensions according to DIN 2642 PN 10 specifications
 Dimensiones segun DIN 2642 PN 10
 Abmessungen nach DIN 2642 PN 10
 Dimensions pour couplage selon DIN 2642 PN 10

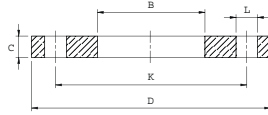
DN	D	K	L	Holes N°	B MET	C
10	90	60	14	4	19	12
15	95	65	14	4	24	12
20	105	75	14	4	30	12
25	115	85	14	4	33	12
32	140	100	18	4	42	16
40	150	110	18	4	48	16
50	165	125	18	4	60	16
65	185	145	18	4	75	16
80	200	160	18	8	90	18
100	220	180	18	8	111	18
125	250	210	18	8	136	18
150	285	240	22	8	161	18
200	340	295	22	8	212	20
250	395	350	22	12	264	22
300	445	400	22	12	315	22
350	505	460	22	16	362	22
400	565	515	25	16	413	25
450	615	565	25	20	465	25
500	670	620	25	20	517	28
600	780	725	30	20	618	30
700	895	840	30	24	715	40
800	1015	950	33	24	825	40
900	1115	1050	33	28	930	44
1000	1230	1160	36	28	1030	44
1200	1455	1380	39	32	1240	52

DN	Ø ISO	D	K	L	Holes N°	Bolts	B ISO	C
10÷40 Usare flange EN 1092-1/01 type A PN 40; Use EN 1092-1/01 type A PN 40 flanges								
50	60.3	165	125	18	4	M16	61.5	19
65	76.1	185	145	18	8	M16	77.5	20
80	88.9	200	160	18	8	M16	90.5	20
100	114.3	220	180	18	8	M16	116.0	22
125	139.7	250	210	18	8	M16	141.5	22
150	168.3	285	240	22	8	M20	170.5	24
200	219.1	340	295	22	12	M20	221.5	26
250	273.0	405	355	26	12	M24	276.5	29
300	323.9	460	410	26	12	M24	327.5	32
350	355.6	520	470	26	16	M24	359.0	35
400	406.4	580	525	30	16	M27	411.0	38
450	457.0	640	585	30	20	M27	462.0	42
500	508.0	715	650	33	20	M30	513.5	46
600	610.0	840	770	36	20	M33	616.5	52

EN 1092-1/01 type A PN 16

Flange piane a saldare

Welding flat flanges
Bridas planas para soldar
Glatte Schweißflanschen
Brides plates souder

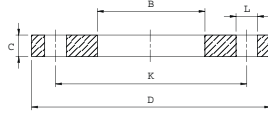


DN	Ø ISO	D	K	L	Holes N°	Bolts	B ISO	C
10÷150 Usare flange EN 1092-1/01 type A PN 40; Use EN 1092-1/01 type A PN 40 flanges								
200	219.1	360	310	26	12	M24	221.5	32
250	273.0	425	370	30	12	M27	276.5	35
300	323.9	485	430	30	16	M27	327.5	38
350	355.6	555	490	33	16	M30	359.5	42
400	406.4	620	550	36	16	M33	411.0	46
450	457.0	670	600	36	20	M33	462.0	50
500	508.0	730	660	36	20	M33	513.5	56
600	610.0	845	770	39	20	M36	616.5	68

EN 1092-1/01 type A PN 25

Flange piane a saldare

Welding flat flanges
Bridas planas para soldar
Glatte Schweißflanschen
Brides plates souder

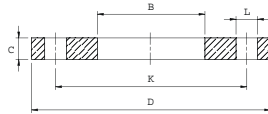


DN	Ø ISO	D	K	L	Holes N°	Bolts	B ISO	C
10	17.2	90	60	14	4	M12	18.0	14
15	21.3	95	65	14	4	M12	22.0	14
20	26.9	105	75	14	4	M12	27.5	16
25	33.7	115	85	14	4	M12	34.5	16
32	42.4	140	100	18	4	M16	43.5	18
40	48.3	150	110	18	4	M16	49.5	18
50	60.3	165	125	18	4	M16	61.5	20
65	76.1	185	145	18	8	M16	77.5	22
80	88.9	200	160	18	8	M16	90.5	24
100	114.3	235	190	22	8	M20	116.0	26
125	139.7	270	220	26	8	M24	141.5	28
150	168.3	300	250	26	8	M24	170.5	30
200	219.1	375	320	30	12	M27	221.5	36
250	273.0	450	385	33	12	M30	276.5	42
300	323.9	515	450	33	16	M30	327.5	48
350	355.6	580	510	36	16	M33	359.5	54
400	406.4	660	585	39	16	M36	411.0	60
450	457.0	685	610	39	20	M36	462.0	66
500	508.0	755	670	42	20	M39	513.5	72
600	610.0	890	795	48	20	M45	616.5	84

EN 1092-1/01 type A PN 40

Flange piane a saldare

Welding flat flanges
Bridas planas para soldar
Glatte Schweißflanschen
Brides plates souder

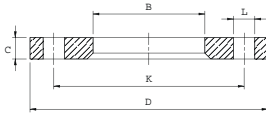


▶ FLANGE EN PIANE SCORREVOLI

EN 1092-1/02 type A PN 6

▶ Flange piane scorrevoli

Loose flanges
Bridas planas locas
Lose Flansche
Brides tournantes plates

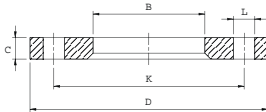


DN	Ø ISO	D	K	L	Holes N°	Bolts	B ISO	C
10	17.2	75	50	11	4	M10	21	12
15	21.3	80	55	11	4	M10	25	12
20	26.9	90	65	11	4	M10	31	14
25	33.7	100	75	11	4	M10	38	14
32	42.4	120	90	14	4	M12	46	16
40	48.3	130	100	14	4	M12	53	16
50	60.3	140	110	14	4	M12	65	16
65	76.1	160	130	14	4	M12	81	16
80	88.9	190	150	18	4	M16	94	18
100	114.3	210	170	18	4	M16	120	18
125	139.7	240	200	18	8	M16	145	20
150	168.3	265	225	18	8	M16	174	20
200	219.1	320	280	18	8	M16	226	22
250	273.0	375	335	18	12	M16	281	24
300	323.9	440	395	22	12	M20	333	24
350	355.6	490	445	22	12	M20	365	26
400	406.4	540	495	22	16	M20	416	28
450	457.0	595	550	22	16	M20	467	30
500	508.0	645	600	22	20	M20	519	30
600	610.0	755	705	26	20	M24	622	32

EN 1092-1/02 type A PN 10

▶ Flange piane scorrevoli

Loose flanges
Bridas planas locas
Lose Flansche
Brides tournantes plates

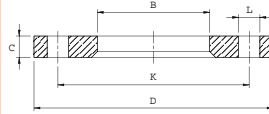


DN	Ø ISO	D	K	L	Holes N°	Bolts	B ISO	C
10+40	Usare flange EN 1092-1/02 type A PN 40; Use EN 1092-1/02 type A PN 40 flanges							
50+150	Usare flange EN 1092-1/02 type A PN 16; Use EN 1092-1/02 type A PN 16 flanges							
200	219.1	340	295	22	8	M20	226	24
250	273.0	395	350	22	12	M20	281	26
300	323.9	445	400	22	12	M20	333	26
350	355.6	505	460	22	16	M20	365	28
400	406.4	565	515	26	16	M24	416	32
450	457.0	615	565	26	20	M24	467	36
500	508.0	670	620	26	20	M24	519	38
600	610.0	780	725	30	20	M27	622	42

DN	Ø ISO	D	K	L	Holes N°	Bolts	B ISO	C
10÷40	Usare flange EN 1092-1/02 type A PN 40; Use EN 1092-1/02 type A PN 40 flanges							
50	60.3	165	125	18	4	M16	65	19
65	76.1	185	145	18	8	M16	81	20
80	88.9	200	160	18	8	M16	94	20
100	114.3	220	180	18	8	M16	120	22
125	139.7	250	210	18	8	M16	145	22
150	168.3	285	240	22	8	M20	174	24
200	219.1	340	295	22	12	M20	226	26
250	273.0	405	355	26	12	M24	281	29
300	323.9	460	410	26	12	M24	333	32
350	355.6	520	470	26	16	M24	365	35
400	406.4	580	525	30	16	M27	416	38
450	457.0	640	585	30	20	M27	467	42
500	508.0	715	650	33	20	M30	510	46
600	610.0	840	770	36	20	M33	622	52

EN 1092-1/02 type A PN 16

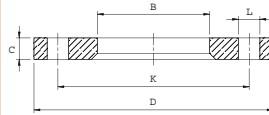
Flange piane scorrevoli
Loose flanges
Bridas planas locas
Lose Flansche
Brides tournantes plates



DN	Ø ISO	D	K	L	Holes N°	Bolts	B ISO	C
10÷150	Usare flange EN 1092-1/02 type A PN 40; Use EN 1092-1/02 type A PN 40 flanges							
200	219.1	360	310	26	12	M24	226	32
250	273.0	425	370	30	12	M27	281	35
300	323.9	485	430	30	16	M27	333	38
350	355.6	555	490	33	16	M30	365	42
400	406.4	620	550	36	16	M33	416	46
450	457.0	670	600	36	20	M33	467	50
500	508.0	730	660	36	20	M33	519	56
600	610.0	845	770	39	20	M36	622	68

EN 1092-1/02 type A PN 25

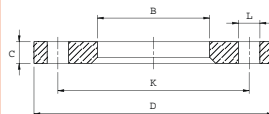
Flange piane scorrevoli
Loose flanges
Bridas planas locas
Lose Flansche
Brides tournantes plates



DN	Ø ISO	D	K	L	Holes N°	Bolts	B ISO	C
10	17.2	90	60	14	4	M12	21	14
15	21.3	95	65	14	4	M12	25	14
20	26.9	105	75	14	4	M12	31	16
25	33.7	115	85	14	4	M12	38	16
32	42.4	140	100	18	4	M16	47	18
40	48.3	150	110	18	4	M16	53	18
50	60.3	165	125	18	4	M16	65	20
65	76.1	185	145	18	8	M16	81	22
80	88.9	200	160	18	8	M16	94	24
100	114.3	235	190	22	8	M20	120	26
125	139.7	270	220	26	8	M24	145	28
150	168.3	300	250	26	8	M24	174	30
200	219.1	375	320	30	12	M27	226	36
250	273.0	450	385	33	12	M30	281	42
300	323.9	515	450	33	16	M30	333	48
350	355.6	580	510	36	16	M33	365	54
400	406.4	660	585	39	16	M36	416	60
450	457.0	685	610	39	20	M36	467	66
500	508.0	755	670	42	20	M39	519	72
600	610.0	890	795	48	20	M45	622	84

EN 1092-1/02 type A PN 40

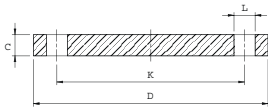
Flange piane scorrevoli
Loose flanges
Bridas planas locas
Lose Flansche
Brides tournantes plates



▶ FLANGE EN CIECHE

EN 1092-1/05 type A PN 6

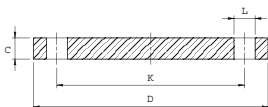
- ▶ **Flange cieche**
Blind flanges
Bridas ciegas
Blindflansche
Brides pleines



DN	D	K	L	Holes N°	Bolts	C
10	75	50	11	4	M10	12
15	80	55	11	4	M10	12
20	90	65	11	4	M10	14
25	100	75	11	4	M10	14
32	120	90	14	4	M12	14
40	130	100	14	4	M12	14
50	140	110	14	4	M12	14
65	160	130	14	4	M12	14
80	190	150	18	4	M16	16
100	210	170	18	4	M16	16
125	240	200	18	8	M16	18
150	265	225	18	8	M16	18
200	320	280	18	8	M16	20
250	375	335	18	12	M16	22
300	440	395	22	12	M20	22
350	490	445	22	12	M20	22
400	540	495	22	16	M20	22
450	595	550	22	16	M20	24
500	645	600	22	20	M20	24
600	755	705	26	20	M24	30

EN 1092-1/05 type A PN 10

- ▶ **Flange cieche**
Blind flanges
Bridas ciegas
Blindflansche
Brides pleines



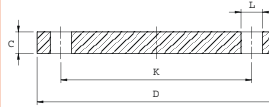
DN	D	K	L	Holes N°	Bolts	C
10-40	Usare flange EN 1092-1/05 type A PN 40; Use EN 1092-1/05 type A PN 40 flanges					
50-150	Usare flange EN 1092-1/05 type A PN 16; Use EN 1092-1/05 type A PN 16 flanges					
200	340	295	22	8	M20	24
250	395	350	22	12	M20	26
300	445	400	22	12	M20	26
350	505	460	22	16	M20	26
400	565	515	26	16	M24	26
450	615	565	26	20	M24	28
500	670	620	26	20	M24	28
600	780	725	30	20	M27	34

DN	D	K	L	Holes N°	Bolts	C
10-40	Usare flange EN 1092-1/05 type A PN 40; Use EN 1092-1/05 type A PN 40 flanges					
50	165	125	18	4	M16	18
65	185	145	18	8	M16	18
80	200	160	18	8	M16	20
100	220	180	18	8	M16	20
125	250	210	18	8	M16	22
150	285	240	22	8	M20	22
200	340	295	22	12	M20	24
250	405	355	26	12	M24	26
300	460	410	26	12	M24	28
350	520	470	26	16	M24	30
400	580	525	30	16	M27	32
450	640	585	30	20	M27	40
500	715	650	33	20	M30	44
600	840	770	36	20	M33	54

EN 1092-1/05 type A PN 16

Flange cieche

Blind flanges
Bridas ciegas
Blindflansche
Brides pleines

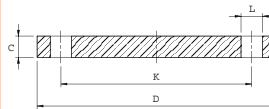


DN	D	K	L	Holes N°	Bolts	C
10-150	Usare flange EN 1092-1/05 type A PN 40; Use EN 1092-1/05 type A PN 40 flanges					
200	360	310	26	12	M24	30
250	425	370	30	12	M27	32
300	485	430	30	16	M27	34
350	555	490	33	16	M30	38
400	620	550	36	16	M33	40
450	670	600	36	20	M33	46
500	730	660	36	20	M33	48
600	845	770	39	20	M36	58

EN 1092-1/05 type A PN 25

Flange cieche

Blind flanges
Bridas ciegas
Blindflansche
Brides pleines

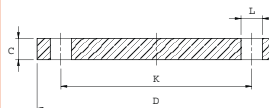


DN	D	K	L	Holes N°	Bolts	C
10	90	60	14	4	M12	16
15	95	65	14	4	M12	16
20	105	75	14	4	M12	18
25	115	85	14	4	M12	18
32	140	100	18	4	M16	18
40	150	110	18	4	M16	18
50	165	125	18	4	M16	20
65	185	145	18	8	M16	22
80	200	160	18	8	M16	24
100	235	190	22	8	M20	24
125	270	220	26	8	M24	26
150	300	250	26	8	M24	28
200	375	320	30	12	M27	36
250	450	385	33	12	M30	38
300	515	450	33	16	M30	42
350	580	510	36	16	M33	46
400	660	585	39	16	M36	50
450	685	610	39	20	M36	57
500	755	670	42	20	M39	57
600	890	795	48	20	M45	72

EN 1092-1/05 type A PN 40

Flange cieche

Blind flanges
Bridas ciegas
Blindflansche
Brides pleines



▶ FLANGE UNI A COLLARINO A SALDARE DI TESTA

UNI 2280-67 PN 6

UNI

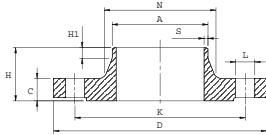
Flange a collarino a saldare di testa con gradino UNI 2229-67

Welding neck flanges

Bridas cuello para soldar

Vorschweißflansche

Brides collettere souder



DN	Ø ISO	D	K	L	Holes N*	Bolts	A ISO	C	H	H1	N	S
10	17.2	75	50	11	4	M10	18.0	12	28	6	26	2.3
15	21.3	80	55	11	4	M10	22.5	12	30	6	30	2.5
20	26.9	90	65	11	4	M10	28.0	14	32	6	38	2.5
25	33.7	100	75	11	4	M10	34.5	14	35	6	42	2.8
32	42.4	120	90	14	4	M12	43.5	14	35	6	55	3.0
40	48.3	130	100	14	4	M12	49.5	14	38	7	62	3.0
50	60.3	140	110	14	4	M12	61.5	14	38	8	74	3.5
65	76.1	160	130	14	4	M12	77.0	14	38	9	88	3.5
80	88.9	190	150	18	4	M16	90.0	16	42	10	102	3.7
100	114.3	210	170	18	4	M16	115.5	16	45	10	130	3.7
125	139.7	240	200	18	8	M16	141.0	18	48	10	155	4.0
150	168.3	265	225	18	8	M16	170.5	18	48	12	184	5.0
200	219.1	320	280	18	8	M16	221.0	20	55	15	236	5.0

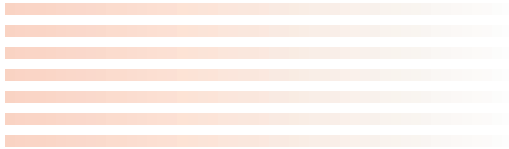
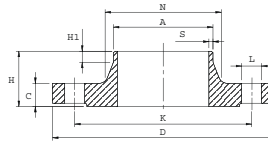
DN	Ø ISO	D	K	L	Holes N°	Bolts	A ISO	C	H	H1	N	S
10÷150					Usare flange UNI 2282-67 PN 16; Use UNI 2282-67 PN 16 flanges							
200	219.1	340	295	22	8	M20	221.0	24	62	16	235	5.0



UNI 2281-67 PN 10

Flange a collarino a saldare di testa con gradino UNI 2229-67

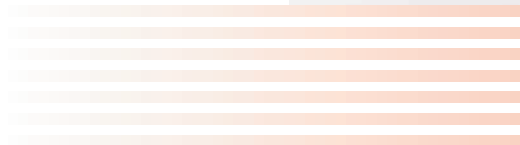
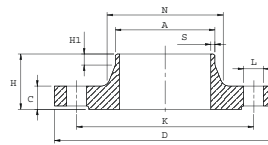
Welding neck flanges
Bridas cuello para soldar
Vorschweißflansche
Brides collettere souder



UNI 2282-67 PN 16

Flange a collarino a saldare di testa con gradino UNI 2229-67

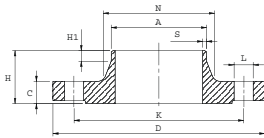
Welding neck flanges
Bridas cuello para soldar
Vorschweißflansche
Brides collettere souder



DN	Ø ISO	D	K	L	Holes N°	Bolts	A ISO	C	H	H1	N	S
10	17.2	90	60	14	4	M12	18.0	14	35	6	28	2.3
15	21.3	95	65	14	4	M12	22.5	14	35	6	32	2.5
20	26.9	105	75	14	4	M12	28.0	16	38	6	40	2.5
25	33.7	115	85	14	4	M12	34.5	16	38	6	45	2.8
32	42.4	140	100	18	4	M16	43.5	16	40	6	56	3.0
40	48.3	150	110	18	4	M16	49.5	16	42	7	64	3.0
50	60.3	165	125	18	4	M16	61.5	18	45	8	75	3.5
65	76.1	185	145	18	4	M16	77.0	18	45	10	90	3.5
80	88.9	200	160	18	8	M16	90.0	20	50	10	105	3.7
100	114.3	220	180	18	8	M16	115.5	20	52	12	131	3.7
125	139.7	250	210	18	8	M16	141.0	22	55	12	156	4.0
150	168.3	285	240	22	8	M20	170.5	22	55	12	184	5.0
200	219.1	340	295	22	12	M20	221.0	24	62	16	235	5.0

UNI 2283-67 PN 25

UNI



Flange a collarino a saldare di testa con gradino UNI 2229-67
Welding neck flanges
Bridas cuello para soldar
Vorschweißflansche
Brides collettere souder

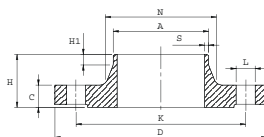
Flange a collarino a saldare di testa con gradino UNI 2229-67
Welding neck flanges
Bridas cuello para soldar
Vorschweißflansche
Brides collettere souder

DN	Ø ISO	D	K	L	Holes N°	Bolts	A ISO	C	H	H1	N	S
10+150	Usare flange UNI 2284-67 PN 40; Use UNI 2284-67 PN 40 flanges											
200	219.1	360	310	25	12	M22	221.0	30	80	16	244	5.0



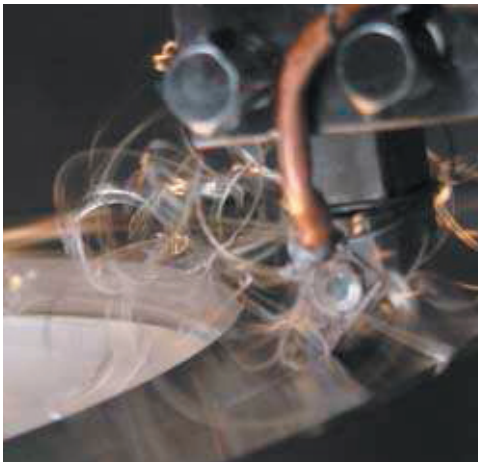
UNI 2284-67 PN 40

UNI



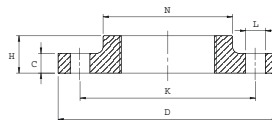
DN	Ø ISO	D	K	L	Holes N°	Bolts	A ISO	C	H	H1	N	S
10	17.2	90	60	14	4	M12	18.0	16	35	6	28	2.3
15	21.3	95	65	14	4	M12	22.5	16	38	6	32	2.5
20	26.9	105	75	14	4	M12	28.0	18	40	6	40	2.5
25	33.7	115	85	14	4	M12	34.5	18	40	6	46	2.8
32	42.4	140	100	18	4	M16	43.5	18	42	6	56	3.0
40	48.3	150	110	18	4	M16	49.5	18	45	7	64	3.0
50	60.3	165	125	18	4	M16	61.5	20	48	8	75	3.5
65	76.1	185	145	18	8	M16	77.0	22	52	10	90	3.5
80	88.9	200	160	18	8	M16	90.0	24	58	12	105	3.7
100	114.3	235	190	22	8	M20	115.5	24	65	12	134	3.7
125	139.7	270	220	25	8	M22	141.0	26	68	12	162	4.0
150	168.3	300	250	25	8	M22	170.5	28	75	12	192	5.0
200	219.1	375	320	30	12	M27	221.0	34	88	16	244	5.5

FLANGE UNI FILETTATE



UNI 2254-67 PN 16

Flange filettate a collare
Screwed flanges
Bridas con cuello roscadas
Gewinde Flansche
Brides viss es collet



DN	Ø GAS	D	K	L	Holes N°	Bolts	C	H	N
15	1/2"	95	65	14	4	M12	14	20	35
20	3/4"	105	75	14	4	M12	16	24	45
25	1"	115	85	14	4	M12	16	24	52
32	1 1/4"	140	100	18	4	M16	16	26	60
40	1 1/2"	150	110	18	4	M16	16	26	70
50	2"	165	125	18	4	M16	18	28	85
65	2 1/2"	185	145	18	4	M16	18	32	105
80	3"	200	160	18	8	M16	20	34	118
100	4"	220	180	18	8	M16	20	38	140

BULLONI PER FLANGE

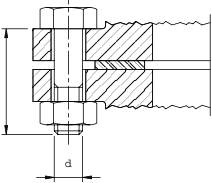
Bulloni per flange

Bolts for flanges

Tornillos para bridas

Sechskantschrauben für Flansche

Boulons pour brides



DN	PN6			PN10			PN16			PN25			PN40		
	N°	d	L	N°	d	L	N°	d	L	N°	d	L	N°	d	L
10	4	10	40	4	12	50	4	12	50	4	12	50	4	12	50
15	4	10	40	4	12	50	4	12	50	4	12	50	4	12	50
20	4	10	45	4	12	50	4	12	50	4	12	55	4	12	55
25	4	10	45	4	12	50	4	12	50	4	12	55	4	12	55
32	4	12	45	4	16	60	4	16	60	4	16	60	4	16	60
40	4	12	45	4	16	60	4	16	60	4	16	60	4	16	60
50	4	12	45	4	16	60	4	16	60	4	16	65	4	16	65
65	4	12	45	4	16	60	4	16	60	8	16	70	8	16	70
80	4	16	60	4	16	65	8	16	65	8	16	70	8	16	70
100	4	16	60	8	16	65	8	16	65	8	20	75	8	20	80
125	8	16	65	8	16	70	8	16	70	8	22	80	8	22	80
150	8	16	65	8	20	75	8	20	75	8	22	90	8	22	90
200	8	16	70	8	20	80	12	20	80	12	22	90	12	27	100
250	12	16	70	12	20	85	12	24	90	12	27	100	12	30	110
300	12	20	75	12	20	85	12	24	90	16	27	100	16	30	120
350	12	20	80	16	20	85	16	24	95	16	30	110	16	33	130
400	16	20	80	16	22	85	16	27	105	16	33	120	16	36	140
450	16	20	80	20	22	85	20	27	105	20	33	120	20	36	140
500	20	20	80	20	22	90	20	30	110	20	33	120	20	39	150
600	20	22	85	20	27	95	20	33	115	20	36	140	20	45	170